

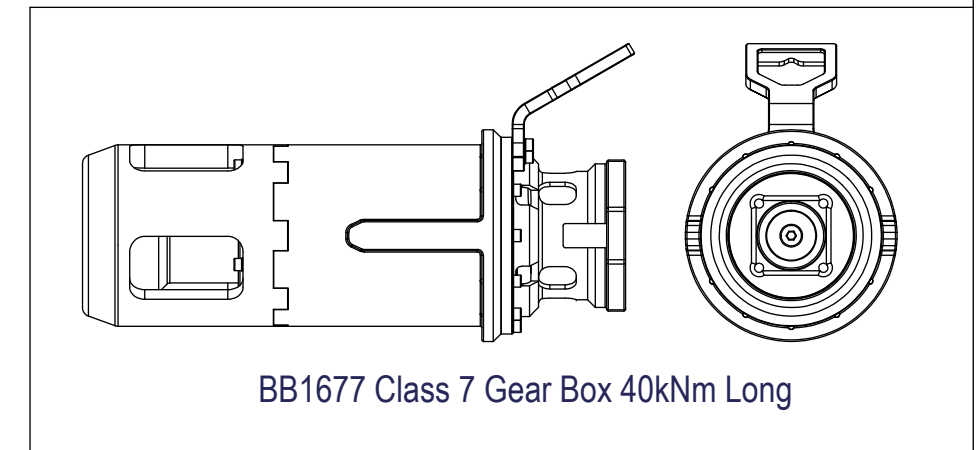
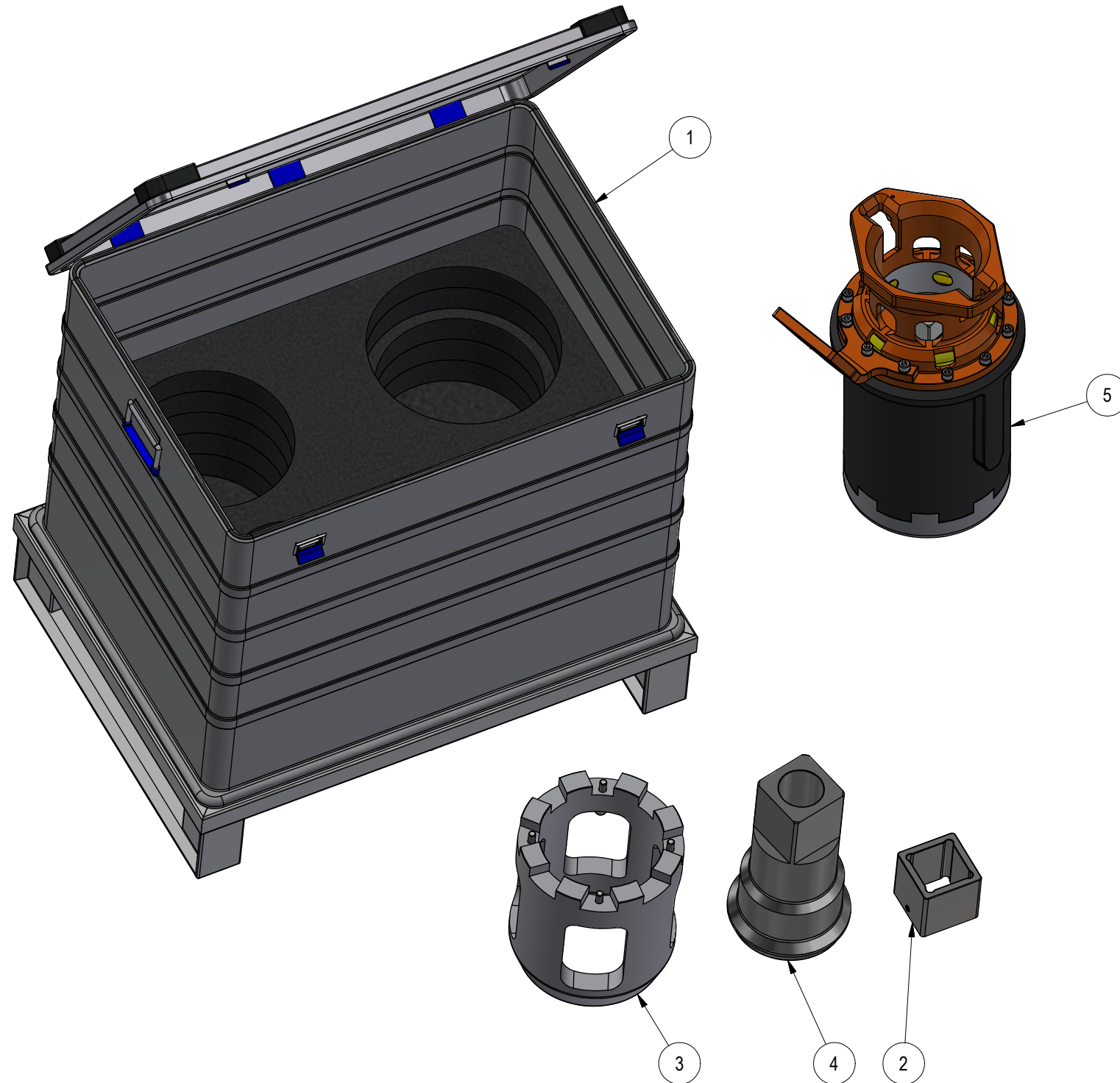
| Parts List | | | | | |
|------------|-----|----------|--|---|--|
| ITEM | QTY | PART No. | TITLE | WEBLINK | |
| 1 | 1 | BB3819 | Alu Box Assy for Gear Box Cl. 7 | N/A | |
| 2 | 1 | BB1680 | Insert Class 6 | N/A | |
| 3 | 1 | BB1679 | Protection Nose Class 7 Long | N/A | |
| 4 | 1 | BB1678 | Planetary Carrier Class 7 Extension Long | N/A | |
| 5 | 1 | BA6403 | Class 7 Gear Box 40kNm | http://e-sea.bluelogic.no/main.aspx?page=article&artno=BA6403 | |

NOTE: 1
DESIGN CODE:
ISO 13628-8/API 17H

NOTE: 2
TECHNICAL CLASSIFICATION:
Article Type: 008-Actuation
Main Group: 8.03. ISO-6-7 Actuation
Intermediate Group: 8.46.04. Test Jig
Sub Group: 8.46.134.02. Intervention

NOTE: 3
INTERFACE INFORMATION:
Pressure Rating Bar: 300
Material: N/A
Weight: 122,4 kg
Volume: 132,79 dm³
Surface Area: 154202 cm²
Hydraulic: N/A
Mechanical: ISO/API 17H Class 4 and Class 7
Electrical: N/A
Com. & Protocol: N/A

NOTE: 4
ADDITIONAL INFORMATION:
Mechanical Gear box with ISO Class 4 input and ISO Class 7 output
40kNm torque capacity.
The gearbox can be configured for Class 7 short and long.
A square insert is delivered to also meet Class 6 dimensions.
Gear ratio can be either 14.31:1, 6.0:1 or 3.79:1 for maximum flexibility.



| | | | | | | |
|------|-----------|---------------------------|-----------------|------|-------|-------|
| 04 | 8.6.2026 | 9-IFU (Issued for Use) | | WTJ | TAN | PBI |
| 03 | 12.7.2021 | 9-IFU (Issued for Use) | | WTJ | KHA | WTJ |
| 02 | 10.9.2019 | 9-IFU (Issued for Use) | | WTJ | LGH | WTJ |
| 01 | 6.9.2018 | 2-IFT (Issued for Tender) | | WTJ | N/A | N/A |
| Rev. | Date | Reason for issue | Revision change | Made | Chk'd | Appr. |

BLUE LOGIC

This Drawing is the Property of Blue Logic AS © and must Not be Loaned, Reproduced or Transferred to others without written Permission

| | |
|-------------|-----|
| Dwg Scale: | NTS |
| Dwg Proj: | |
| Dwg Format: | A3 |

| | | |
|-----------------|------------------------------------|---------|
| Drawing title: | Gear Box Class 7 40kNm Arrangement | |
| Drawing number: | BB2408 | Rev. 04 |